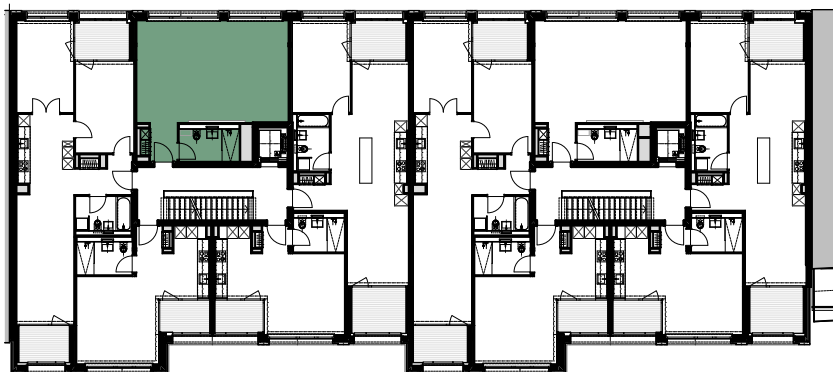
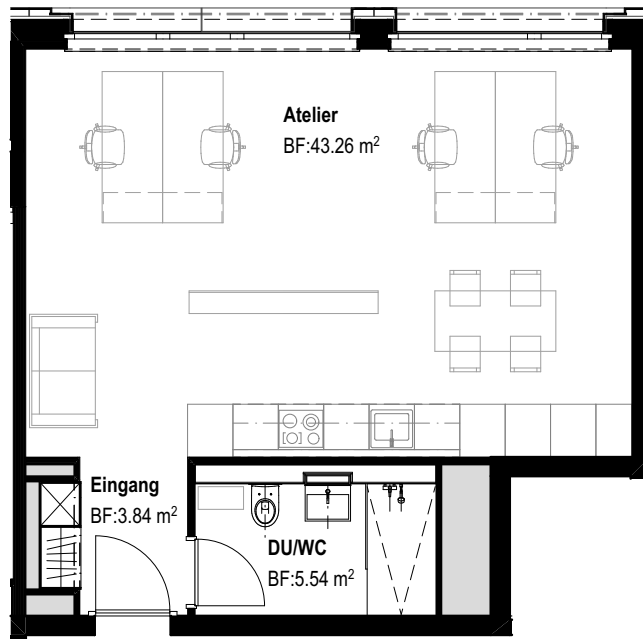


# 23

Urbaner Wohnkomfort an der Limmatstrasse

# 25



## 1½-ZIMMER-ATELIER

Referenz: 25\_OG04\_500

Gebäude: 25

Limmatstrasse

4. Obergeschoss

Wohnfläche: 52.6 m<sup>2</sup>

Terrasse/Loggia: - m<sup>2</sup>

Keller: - m<sup>2</sup>

Massstab 1:100

